

Arun Dale, Mansfield Woodhouse, Mansfield, Nottinghamshire NG19 9RF

 1

 1

 1

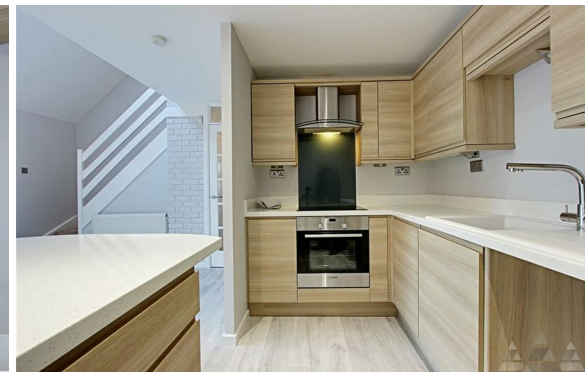
 C

£700 PCM

PINEWOOD



**Arun Dale
Mansfield Woodhouse
Mansfield
Nottinghamshire
NG19 9RF**



£700 PCM

**1 bedroom
1 bathroom
1 reception**

- ONE BEDROOM
- MODERN FITTED KITCHEN
 - MEZZANINE FLOOR
- MODERN BATHROOM
 - UPVC
- GAS CENTRAL HEATING
- OFF STREET PARKING
- ENCLOSED REAR PATIO
- SECURITY DEPOSIT £807
- COUNCIL TAX BAND: A



SOMETHING VERY SPECIAL... Pinewood Properties are delighted to offer this superb one bedroom house with a mezzanine floor. This could be all that you want in a home and offers some lovely talking points and features that should make for a comfortable stay. Having an open plan lounge / diner and kitchen that looks up to the high ceilings, a modern fitted kitchen and family bathroom and a double bedroom that can look over to the lounge. The lounge has sliding patio doors leading out to the enclosed garden, Call to book your visit today to avoid disappointment.

****If you would like to view this property, or apply for it, please click the 'Request Details' button on Rightmove and enter your information****

Lounge/Diner

14' x 12'2 (4.26m x 3.71m)

This spacious lounge and dining area features high vaulted ceilings with a balcony-style landing overlooking the room below, creating an open and airy atmosphere. Light floods in through the sliding patio doors fitted with vertical blinds, offering access to the outside and a pleasant view. The neutral décor and light wood-effect flooring provide a versatile backdrop, while wall-mounted lights add warmth and ambience. The space flows seamlessly into the kitchen, enhancing the open-plan feel.

Kitchen

10'4 x 5'11 (3.14m x 1.81m)

This kitchen is modern in style with light oak-effect cabinets and clean white work surfaces that wrap around in an L shape, providing ample space for cooking and storage. Integrated appliances include an oven with a sleek black splashback and extractor hood, while a built-in microwave is fitted into the island unit. The kitchen island offers additional workspace and storage, making it practical and stylish, with recessed ceiling spotlights enhancing the bright and airy ambience.

Bathroom

6'2 x 5'10 (1.89m x 1.78m)

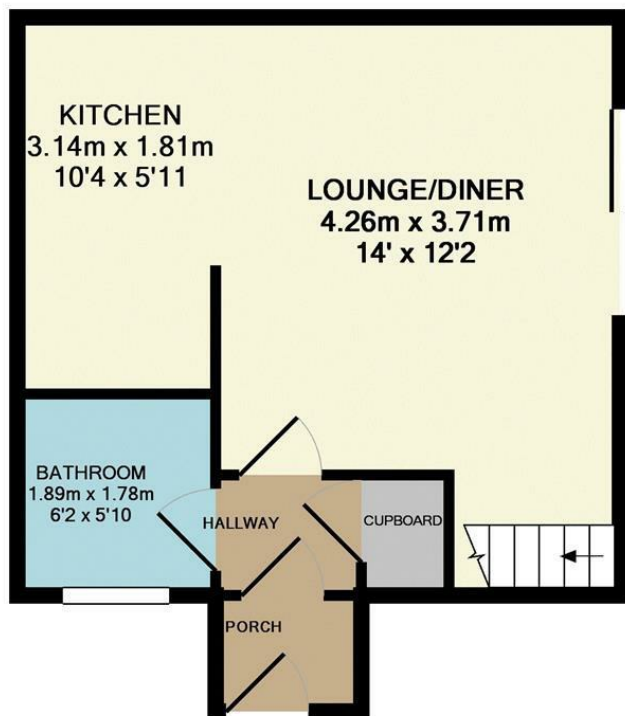
This bathroom is compact yet well-appointed, featuring a white bath with a glass shower screen, a contemporary vanity unit with integrated basin and storage beneath, and a close-coupled WC. Neutral tiling with a decorative border runs along the walls, complementing the wooden-effect panelling on the bath and vanity units. A window fitted with vertical blinds allows natural light to filter in while maintaining privacy.

Bedroom

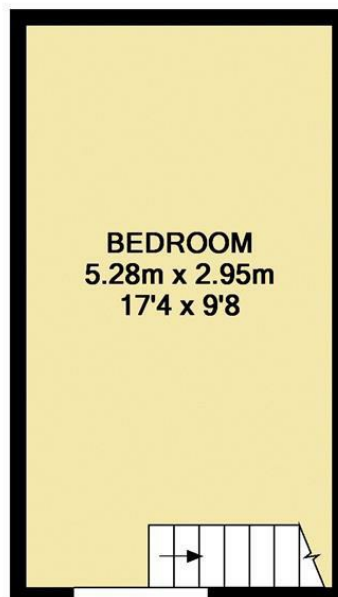
17'4 x 9'8 (5.28m x 2.95m)

The bedroom on the first floor is generously sized and carpeted for comfort. It features a window and a skylight, both fitted with blinds, providing good natural light and ventilation. The neutral walls and ceiling make it a peaceful and inviting retreat, with space for various bedroom furniture arrangements.

The open railing along the balcony landing adds architectural interest and overlooks the lounge/diner below.

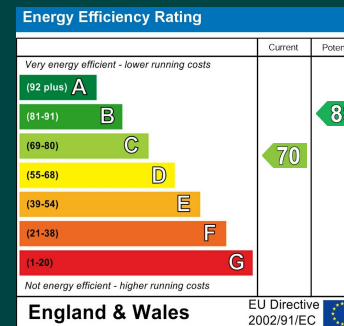


GROUND FLOOR



1ST FLOOR

Whilst every attempt has been made to ensure the accuracy of the floor plan contained here, measurements of doors, windows, rooms and any other items are approximate and no responsibility is taken for any error, omission, or mis-statement. This plan is for illustrative purposes only and should be used as such by any prospective purchaser. The services, systems and appliances shown have not been tested and no guarantee as to their operability or efficiency can be given
Made with Metropix ©2019



Mansfield branch
24 Albert Street
Mansfield, NG1
01623 621001

Clowne branch
26 Mill Street,
Clowne, S43 4JN
01246 810519

Clay Cross branch
20 Market Street,
Clay Cross, S45 9JE
01246 251194

Chesterfield branch
33 Holywell Street,
Chesterfield, S41 7SA
01246 221039

PINEWOOD

